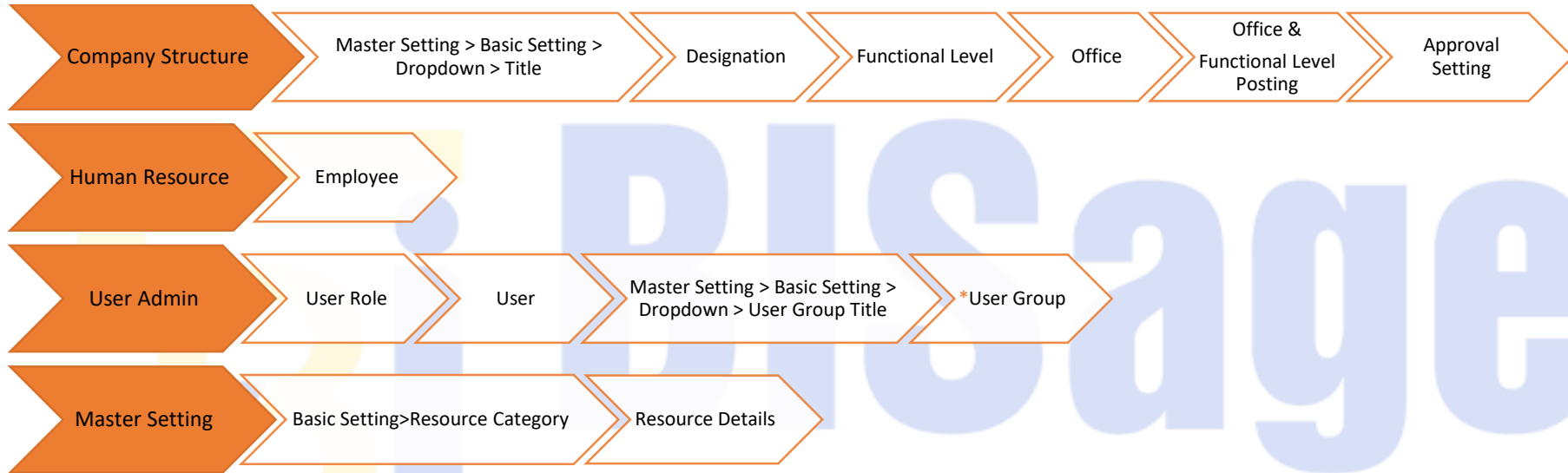
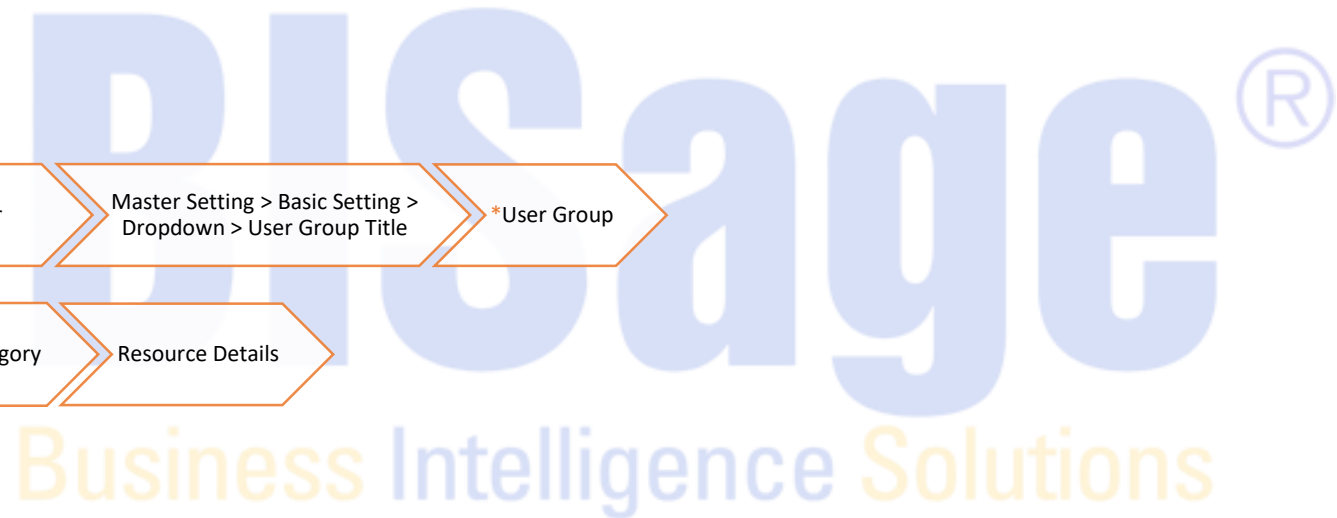


Process Flow Chart- Primary Setting



Notations

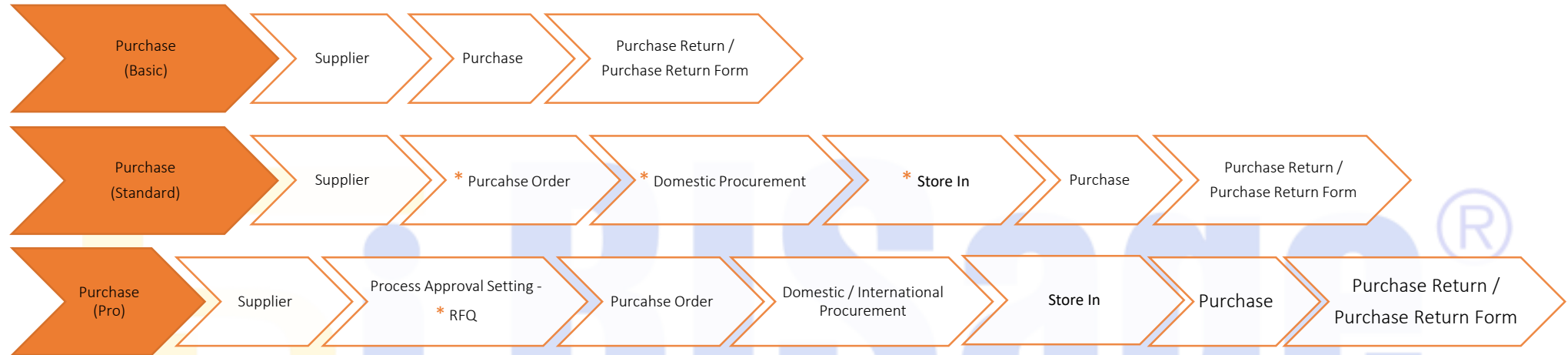
*Optional



Transforming Today. Scaling Tomorrow.



Process Flow Chart- Purchase Module



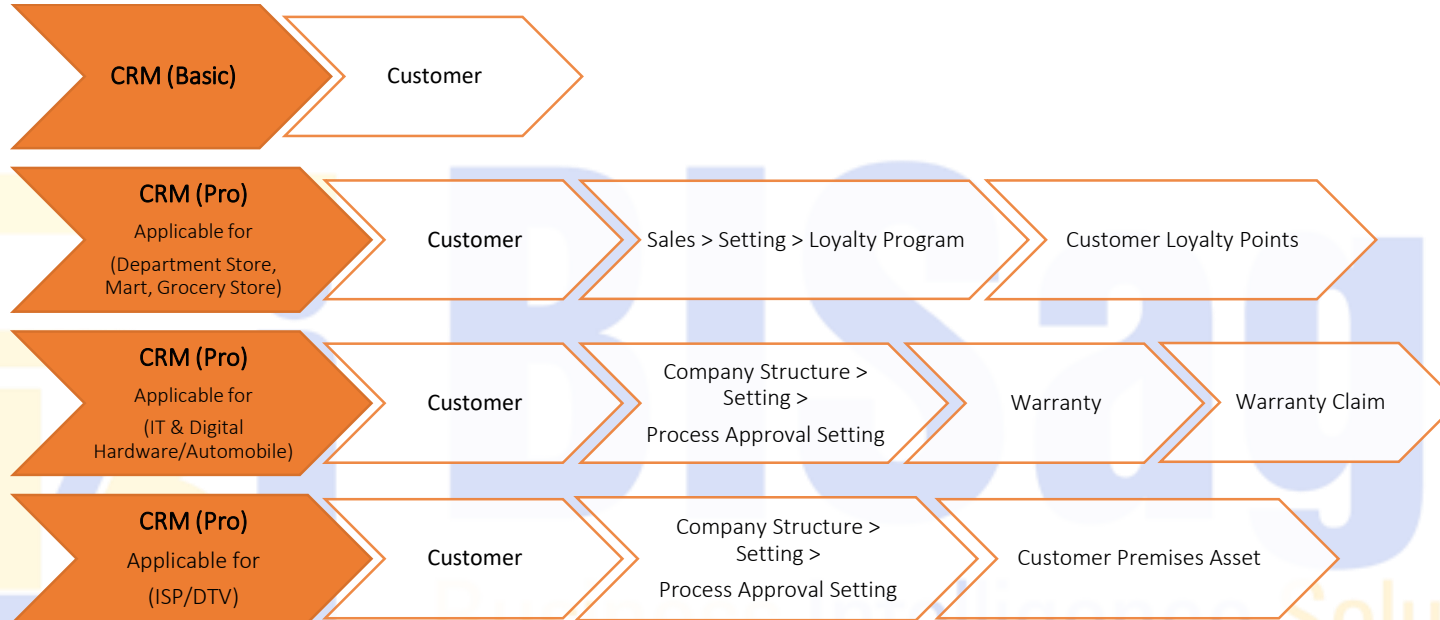
Notations

*Optional

Business Intelligence Solutions
Transforming Today. Scaling Tomorrow.



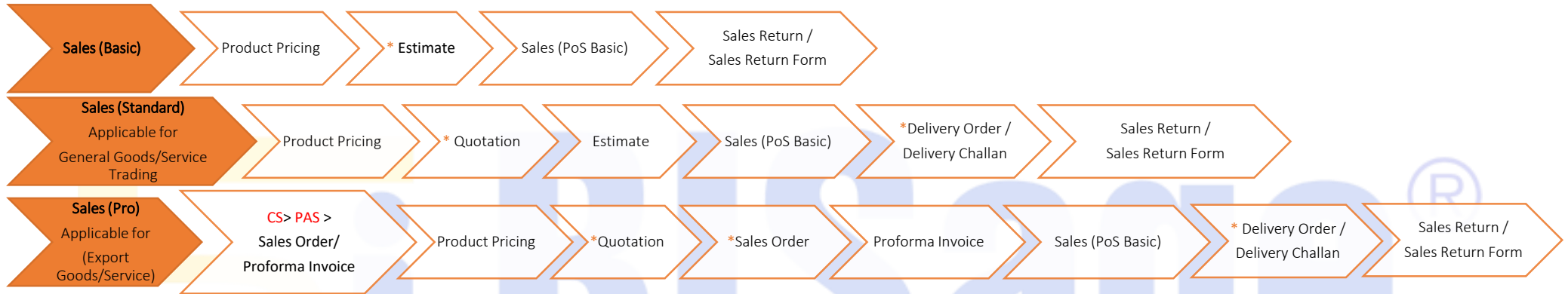
Process Flow Chart- CRM Module



Transforming Today. Scaling Tomorrow.



Process Flow Chart- Sales Module



Notations

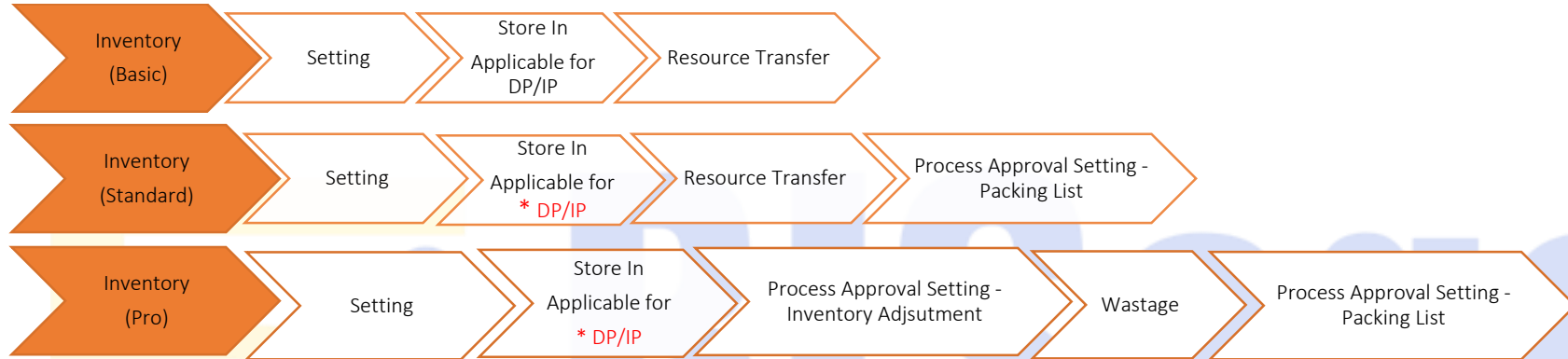
- * Optional
- * CS=Company Structure
- * PAS=Process Approval Setting

Business Intelligence Solutions

Transforming Today. Scaling Tomorrow.



Process Flow Chart- Inventory Module



Notations

*DP: Domestic Procurement

*IP: International Procurement

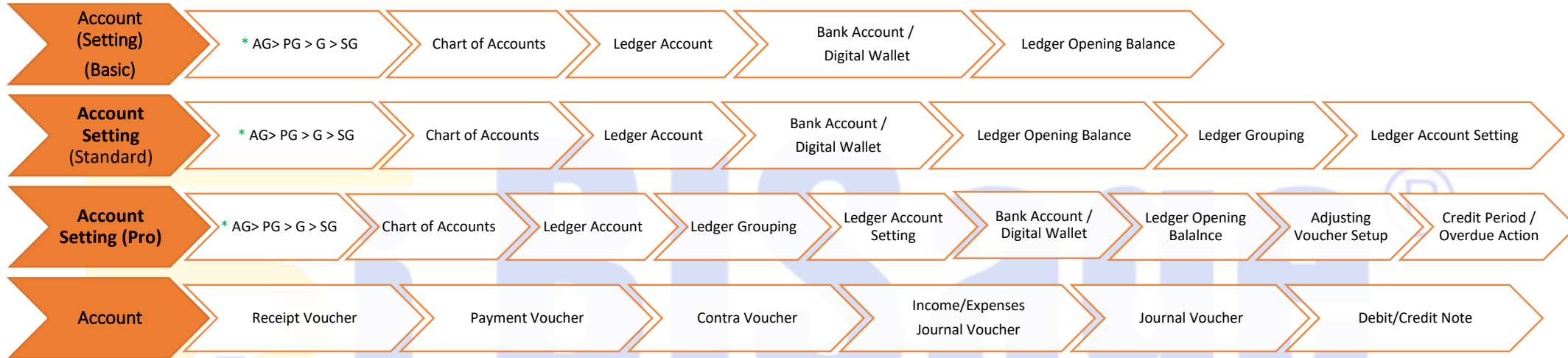


BISage
Less Intelligence Solutions

Transforming Today. Scaling Tomorrow.



Process Flow Chart- Account



Notations:

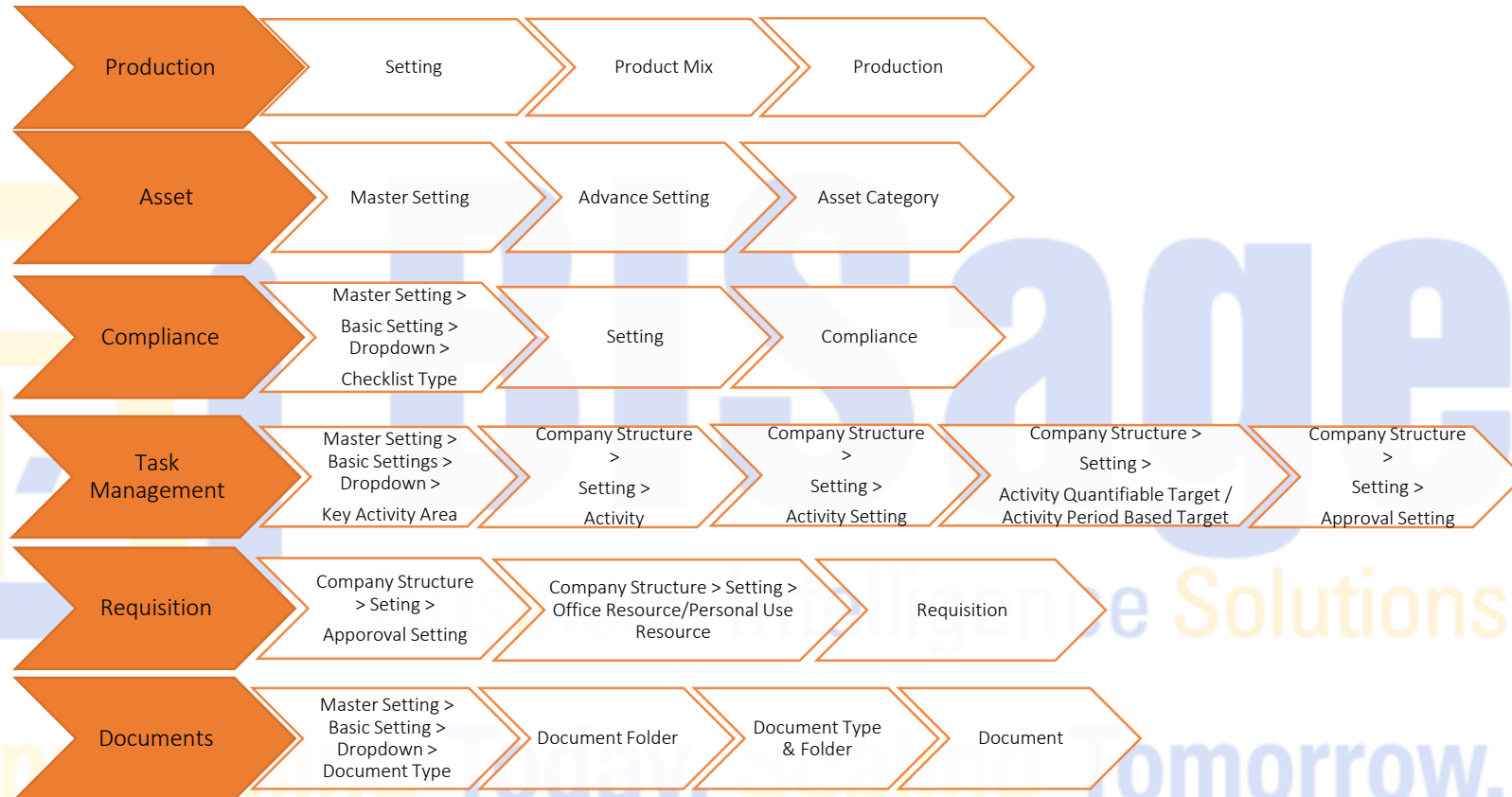
- AG Accounting Group
- PG Primary Group
- G Group
- SG Sub-group

Business Intelligence Solutions

Transforming Today. Scaling Tomorrow.



Process Flow Chart-Other Modules



Notes:

- 1) Process flow depends on Industry classification.
- 2) Process flow also depends on available BIS edition.
- 3) Please refer to User Manual/Video Tutorial for further details